

Our mission is to create a safe, respectful evidence-based learning environment where a diversity of student learners feel: Valued, actively engaged, challenged and supported to achieve success and maximum independence post-school.



HAMLYN VIEWS SCHOOL NEWSLETTER | 4th February 2022

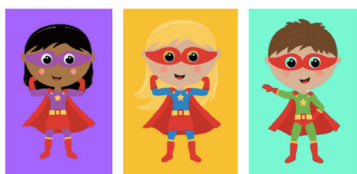
PH: 5215 5700

www.hamlynviews.vic.edu.au

Principal – Suzanne Armstrong

2022 KEY DATES

- **February 2022 Foundation Transition**
Amended timetable until February 11th – 12:15PM finish
No school for Foundation students on Wednesday for all of February
- **Monday 7th February 2022**
Student Immunisation (ages 5-11)
- **Wednesday 9th February 2022**
School Council Meeting, 5PM
- **Wednesday 23rd February 2022**
Learning Conversations (SSG's)
- **Thursday 3rd March 2022**
World Wildlife Day
- **Sunday 6th March 2022**
Clean Up Australia Day
- **Monday 14th March 2022**
Labour Day Public Holiday
- **Thursday 17th March 2022**
St. Patricks Day
- **Monday 21st March 2022**
Harmony Day
World Down Syndrome Day
- **Friday 8th April 2022**
Last day of Term 1 – 1:30PM finish



Foundation First Week of School for 2022



The Foundation students have made a wonderful start to the school year. They have been exploring the school, completing activities in the classroom, meeting new friends and teachers, and discovering new toys to play with. We are really looking forward to getting to know them as the year progresses.

Well done to all on such a great start!



PRINCIPALS MESSAGE



Principal News

Welcome back everyone and a very special welcome to all our new students and families, particularly our Foundation students who are beginning their educational journey with us this year. I hope the holiday break was a time for some rest and relaxation for you, despite the challenges presented by the ongoing Covid-19 pandemic. Many thanks to parents/carers who have supported the Department of Education's Return to School Plan including using Rapid Antigen Tests (RATs) with students before school each day. Together we will work hard to keep everyone safe and healthy in our community, and students learning onsite at school.

Staff



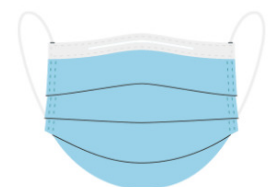
As we begin our fifth year as a school community, we have reached a special milestone reaching 102 enrolments and over 50 staff. We have a number of new staff joining us this year, including classroom teachers, support and administration



staff, and several new leadership appointments. I want to welcome you all to our school and hope you enjoying being part of the Hamlyn Views staff team. I especially want to congratulate Warren Dawson who was appointed as Assistant Principal (AP) in January, as a result of former AP Michele Marcu moving to a Regional Inclusive Education Manager role.

Unfortunately, despite conducting extensive recruitment processes, including during the holiday period, we have two classroom teacher positions still to fill. We are recruiting again and are hopeful these appointments will be made soon. During January teacher Jenny Dridan also secured employment external to our school, whilst teacher Mollie Stirton has commenced Parental Leave while she waits the arrival of her baby. We wish them both all the very best. A list of our current staff has been included with the newsletter.

COVID-19



In the current Covid-19 environment change occurs on a regular basis and sometimes advice and updates to Government Schools isn't timely or specific to specialist schools. Wherever possible, we will try to keep



parents/carers informed with the latest information so we can continue to work together as we navigate the 'new normal'. Please contact us if you need clarification or have a question that has not been answered through messages. SEESAW is our main form of communication, but we will be trialling COMPASS alerts, along with SEESAW information, in the event of a positive Covid-19 case onsite where students may be required to isolate. A weekly supply of student Rapid Antigen Tests will be sent home for the first four weeks each Friday with students unless other arrangements are made.

Learning Conversations Day - Student Support Group Meetings (SSG's)



Each year we have four dedicated days where teachers, parents/carers, along with any Allied Health or Support Workers can meet together to plan and discuss students Individual Education Plan (IEP) goals. This term we will be holding these meetings on **Wednesday 23rd February**. Regular classes do not operate on these days and buses do not run. Students attend their scheduled SSG meeting with their family wherever possible. Information will go home shortly to book your child's meeting time.

LEARNING | RESPECT | SAFETY

Support for Barwon Valley School



As shared earlier this week, two classes of students from Barwon Valley School (BVS) are being hosted by us for a few days whilst their school buildings recover from flood damage as a result of recent storms. We are happy to support our Barwon Valley colleagues at this time and as they provide a back-to-school program for these students that has seen their start to the school year interrupted. We wish their school community all the very best as they undertake all the associated work recovering from the impact of storm damage.

School Council Elections 2022



All schools are required to have a School Council. Our first meeting for this year will be next Wednesday 9th February at 5:00pm. In term one annually we conduct elections and this year have increased council member numbers (7 to 9), with additional parent and DET members. We will also have our first students as council representatives. More information will be distributed on Monday 14th February about this year's School Council Election process.

Late Arrivals and Early Pick-Up's

**CHECK-IN
NOW**



As our student numbers grow, and with the need to manage student entry/exit to school, late arrivals and early departures impact on class and school organisation. We are aware some of these situations are unavoidable but ask where possible students arrive on time.

If carers are collecting students at the end of the school day, they will need to sign the record sheet at the office and show identification. For any new carers it is important that parents inform school who will be collecting their child

A reminder visitor entering the school building are required to wear a facemask and record their details for contract tracing purposes. This can be done via a QR Code on your smart phone.

Car Park Access



Access to the school carpark in Calvert Street is only for staff and due to our ever-growing number of staff there is very limited free car spaces. We have five Disabled Parking Bays for cars with a Disability Sticker, however we request that priority is given to families with wheelchairs, wherever possible. Some

parents/carers have been granted permission on an individual basis to use the car park for student safety reasons. Please note, the side carpark gates are closed between the hours of 9:25am – 2:35pm.

Photography, Filming and Recording



To ensure privacy is maintained for members of our school community, we request that parents/carers, students and invited guests who photograph, film or record school related activities, only do so for their own personal use and do not publish the images in any form, including on social media such as Facebook, without the prior consent of the people that appear in the images.

Student Mobile Phones Policy

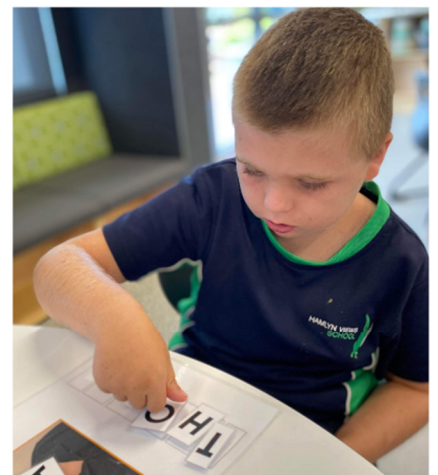


Government policy requires that all schools have a Student Mobile Phone Policy. Where student's bring mobile phones to school, they will be stored in a secure area then collected at the end of the day.

Yours in educational partnership,

Suzanne Armstrong
Principal

LEARNING | RESPECT | SAFETY



RADIAL Film Making Project

BACK TO BACK THEATRE

A group of Hamlyn Views Senior Secondary Students will have the opportunity in Term 1 to work with an innovative theatre company called Back to Back Theatre, based in Geelong.

Students will participate in a project called 'RADIAL', during a weekly one and half hour workshop, each Wednesday leading up to a 3-day filming schedule in week 10 of Term 1. The outcome will include a professionally produced film that will be shared with the school community.

For more information on the RADIAL project and video examples from other participating schools visit www.backtobacktheatre.com/project/radial/

2022 Music in Schools - DUET Teacher Professional Learning Program



Hamlyn Views School staff are excited that our school has been selected to participate in the Music

in Schools DUET Professional Learning Program.

Taking place over terms 2 and 3, 2022, DUET provides mentoring-based professional learning including flexible in-class and online mentoring and coaching delivered by experienced Song Room music educators. The program also provides funding of up to \$4,000 towards musical instruments and musical classroom resources.

DSA – The Disabled Surfers Association of Australia



DSA is holding a Hands on Surf Day on March 6th in Ocean Grove.

Register here to take part in the event:

<http://disabledsurfers.org/vic/ocean-grove-branch/>

Roaring Respite



Roaring Respite has released a program for Young Adults aged 18-25 years, giving individuals a chance to socialise, develop on skills and gain confidence in who they are. Contact roaringrespite@gmail.com

LEARNING | RESPECT | SAFETY

or phone on 0466 606 473 for more information.

Exciting Bus News



In the last few days of term 4, 2021 – The Costa Foundation granted our school \$40,000 toward the purchase of our very own modified school bus! These funds, together with our fundraising efforts since the school opened, mean we now have the necessary funds to be able to purchase a bus ready for Term 2 in 2022. Thank you one and all for your support in making our dream a reality, we all did this together!



Our Senior Secondary student, Lachlan Shrume, raised \$42 over the school holidays in community donations to contribute to our bus fundraising. Great work Lachlan!

Anaphylaxis



Allergy & Anaphylaxis Australia

Your trusted charity for allergy support

Anaphylaxis is a severe, rapidly progressing allergic reaction that is potentially life threatening which often involves more than one body system (e.g., skin, respiratory, gastrointestinal and cardiovascular). An allergy is an overreaction by the body's immune system to a normally harmless substance and may progress into anaphylaxis at any time. The most common allergens in school aged children are peanuts, eggs, tree nuts e.g., cashews, cow's milk, fish and shellfish, wheat, soy, sesame, latex, certain insect stings and medication. The key to prevention of anaphylaxis at Hamlyn Views School is knowledge of students diagnosed at risk, awareness of trigger (allergens) and prevention of exposure to these triggers. Banning of food or other products is not recommended by DET. Our school focuses on raising awareness of the risks associated with anaphylaxis and implementing practical strategies to minimise exposure to allergens. This includes shared knowledge of students at risk of anaphylaxis and staff trained in the emergency treatment of a child having anaphylactic reaction.

Please ensure to update the school if your child has been recently diagnosed by a medical practitioner with any allergies or is "at risk" of

Anaphylaxis. Access the school's Anaphylaxis Management Policy on the website, request a copy from the office or make an appointment to speak to me.

Leanne Treloar

School Nurse

Respectful Behaviours within the School Communities







Our school community has demonstrated incredible resilience throughout the COVID-19 pandemic. With students back in classrooms, and as we adjust to new

ways of managing our health and safety in schools, it's more important than ever that adults in our school community treat each other with respect and kindness. Learn more about the expectations of behaviour in Victorian school communities @ <https://www.education.vic.gov.au/Pages/Respectful-Behaviours-within-the-School-Community-Policy.aspx> You may also see a new poster up around our school, promoting positive behaviour. It's also included in the newsletter

For more information on how to engage positively with our school, please contact a member of the principal class team Suzanne Armstrong or Warren Dawson.

SCHOOLDAY MORNING ROUTINE

-  **1 GET READY FOR SCHOOL**
-  **2 DO A RAPID ANTIGEN TEST**
-  **3 IF POSITIVE, YOU AND YOUR HOUSEHOLD MUST ISOLATE FOR SEVEN DAYS**
-  **4 REPORT YOUR POSITIVE RESULT AT [CORONAVIRUS.VIC.GOV.AU/REPORT](https://coronavirus.vic.gov.au/report)**

coronavirus.vic.gov.au/back-school-plan



Department of Health

LEARNING | RESPECT | SAFETY

Schools' Privacy Policy



Our school collects, uses, discloses and stores student and parent personal information for standard school functions or where permitted by law, as stated in the Schools' Privacy Policy:

<https://www.education.vic.gov.au/Pages/schoolsprivacypolicy.aspx>

Please take time to remind yourself of our school's collection notice, found on our website <https://hamlynviews.vic.edu.au/our-school/#policies>.

For more information about privacy, refer to: Schools' privacy Policy – information for parents: <https://www.education.vic.gov.au/Pages/Schools-Privacy-Policy-information-for-parents.aspx>

This information is also available in ten community languages:

- Amharic
- Arabic
- Dari
- Gujarati
- Mandarin
- Somali
- Sudanese
- Turkish
- Urdu
- Vietnamese

Child Safe Standards - Zero tolerance for child abuse

PROTECT

Everyone has the right to be safe and be protected from abuse. No one should behave in a way that makes you feel unsafe or afraid, including anyone in your family, anyone at school or anywhere else in the community. Tell a teacher or any adult at your school if you feel unsafe. For Students, please call: 1800 551 800 (Kids Helpline) In an emergency, always contact 000 for emergency services.



It's everyone's responsibility. Adults at school must listen and respond to concerns about child abuse. If you suspect abuse of any child or young person, you have a responsibility to report it, even if you are not sure.

Further information & resources

For Parents: 1800 991 999 (Child Wise Helpline) 131 379 Child Protection (Crisis Line) 1300 138 138 (Child First)

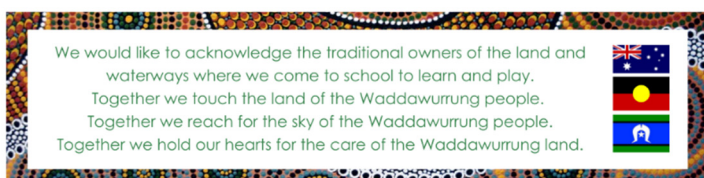
Child safety is a high priority at Hamlyn Views school, and we have zero tolerance for child abuse.

In order to ensure the safety of our students we engage in learning activities that support our students to identify people and actions that help keep themselves safe and healthy.

This includes during the first few weeks of school when we deliver our 'Bright Beginnings' program that incorporates the Respectful Relationships program, and aspects of the Health, and Personal and Social Capabilities of the Victorian Curriculum.

We encourage families to support their student to develop awareness of the protective behaviours that will help keep them safe from harm and abuse.

This year Warren Dawson, our Assistant Principal, will assume the role of school Child Safe Champion. If you have any questions about the Child Safe Standards you may contact him.



Hamlyn Views School is committed to the safety and wellbeing of all children and young people and has zero tolerance for any form of child abuse.

PROTECT
Protecting children & young people from abuse is our responsibility



Our Staff 2022 [Subject to change]

Principal: Suzanne Armstrong	Assistant Principal: Warren Dawson
Foundation Green	Foundation Blue
Samantha Simpkin (T)	Ranelle McNamara (T)
Lee Halligan (ES)	Maryanne Rocci (ES) April Drew (ES)
Foundation Purple	
Rachel D'Cruz (T)	
Kylee Coleman (ES)	
Early Primary Green	Early Primary Blue
(T)	(T)
Fiona Foitzik (ES)	Ali Woodard (ES)
Early Primary Purple	Early Primary Orange
Bianca Tyler (T)	Kate Cole (T)
Sheridan Ball (ES)	Megan Willis (ES)
Early Primary Red	Early Primary Yellow
Monique Laven (T)	Kaleesha Verdichizzi (T)
Jess Blakeley (ES)	Veronica Pulis (ES) Tori Cracknell (ES) Fiona Bakker (ES) Dezi Spathas (ES)
Upper Primary Green	Upper Primary Blue
Andrew Watkins (T)	Sharon Miguel (T)
Larissa Young (ES)	Alice Ainsworth (ES)
Junior Secondary Green	Junior Secondary Blue
Amy Page (T)	Jacqui Chalmers (T)
Michele Meisel (ES)	Abi Hobbs (ES)
Senior Secondary Green	Senior Secondary Blue
Jacqueline Robinson (T)	Olivia Couch (T)
Catherine Dawson (ES) Bella Bennett (ES Trainee)	Jackson Shell (ES)
Senior Secondary Purple	
Jessie Zerbst (T)	
Margaret Hetherington (ES)	
ADMINISTRATIVE TEAM	SPECIALIST TEACHING STAFF
Business Manager: Carolyn Haskett	Visual Arts: Mim Pappiniemi
Operations: Stephanie Caramanico	Performing Arts: Annie Malesic
Administrative Assistant: Amanda Kovacev	Physical Education: Marty Duffy
Human Resources: Tina Castillo	Inclusion Co-ordinator: Melissa McDonald
DET ICT Technician: Jake Lancaster	
THERAPY AND WELLBEING STAFF	TEACHER LEADERS
Occupational Therapist: David Rittinger	Leading Teacher: Ashley Kalkandis
Speech Therapist: Alice Stubbings	Learning Specialist: Samantha Simpkin
Physiotherapists: Sarah W & Abhi S	Learning Specialist/IOC: Natasha M & Claire T
Music Therapist: Bingyao Liu	Secondary PLC Leader: Olivia Couch
Nurse: Leanne Treloar	Primary PLC Leader: Ranelle McNamara
Allied Health Assistant: Natalie Stevenson	Digital Technologies Leader: Sharon Miguel
Mental Health Practitioner: Anchi Sherpa	
Chaplain: Paul Tyson	
Social Worker: Jessie Francis	

Respectful school communities start with respectful behaviour

Parents, carers, staff and students can help keep our school community safe, supportive and respectful.

Good relationships are based on:



Open and honest communication



Trust and respect



Working together



Fair and reasonable expectations by all

These behaviours are **not** okay in our school community:

- ⊗ Threats
- ⊗ Violence
- ⊗ Rudeness

- ⊗ Harassment
- ⊗ Discriminatory and derogatory comments

- ⊗ Aggression
- ⊗ Intimidation
- ⊗ Threatening gestures

This includes in-person, over-the-phone, email, text message, social media and online.

For more information ask your school about the **Respectful Behaviours within the School Community Policy**.