

Our mission is to create a safe, respectful evidence-based learning environment where a diversity of student learners feel: Valued, actively engaged, challenged and supported to achieve success and maximum independence post-school.



HAMLYN VIEWS SCHOOL NEWSLETTER | 25th February 2022

PH: 5215 5700

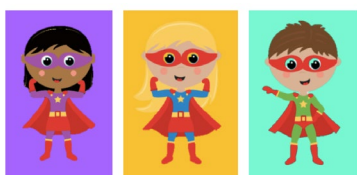
www.hamlynviews.vic.edu.au

Principal – Suzanne Armstrong

School Council President – Ingrid Jennings

2022 KEY DATES

- **Thursday 3rd March 2022**
World Wildlife Day
- **Sunday 6th March 2022**
Clean Up Australia Day
- **Monday 14th March 2022**
Labour Day Public Holiday – Student Free Day
- **Thursday 17th March 2022**
St. Patricks Day
- **Monday 21st March 2022**
Harmony Day Celebrations – **Time TBC**
World Down Syndrome Day
- **Friday 8th April 2022**
Last day of Term 1 – 2:30PM finish
- **Sunday 17th April 2022**
Easter Sunday
- **Monday 25th April 2022**
ANZAC Day Public Holiday
- **Tuesday 26th April 2022**
First day of Term 2



We would like to congratulate Anna Koterac on being nominated as the parent representative for the 2022 Family & Community Engagement Team. We look forward to collaborating with Anna this year.

Open classrooms will not be happening in Term 1. They will be held during Education Week in May, term 2. Harmony Day will be celebrated on Monday of Week 9. Stay tuned for more details!

PRINCIPALS MESSAGE



Principal News

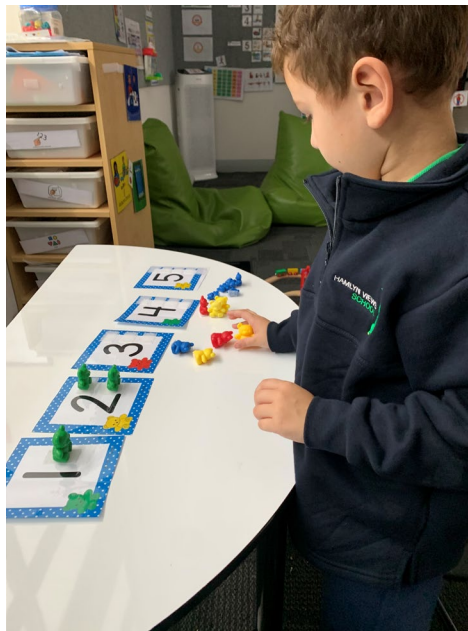
Dear parents and carers,

We are approaching the end of February and the half-way point of the term. Our school community is settling into its daily programs after the initial period of getting to know new people and changed schedules and classrooms. Our Foundation students will be attending for a full week from the start of March and it has been lovely to see their progress as they have become more familiar with staff and other students, and the routines and expectations of a school environment over the last few weeks.

Learning Conversations (Student Support Group -SSG) Day

Thank-you to families who engaged in SSG meetings yesterday or have plans to meet over the next week. It was pleasing that so many parents/carers, along with their child's external professionals, accepted the option to attend on-site for these important meetings. Webex is also a great tool to conduct meetings and we are grateful to everyone who participated in SSGs either online or in-person. As explained at meetings

each student's Individual Education Plan (IEP) will go home by the end of term one. The new IEP's being developed, based on the Department of Education and Training (DET) template, should help provide more input from families and carers in regards to setting long and short term goals for their child. More information about the new IEP format will be sent out to you in the coming weeks.



**School success starts
with attendance**

Hamlyn Views School recognises that being at school on time and attending every day contributes towards a student's learning, and that maximising school attendance enhances learning outcomes. We take attendance very seriously and aim to support all students to attend school as close to 100% as possible. Where a student is absent parents/carers must provide a reason for them not attending school. For more information regarding attendance please follow the link to the [Education Department's Attendance Policy](#)

School Council

Following the recent election for membership of School Council the following representatives have been elected. Their support of our school in this role is greatly appreciated.

- Parent category – Ingrid Jennings and Diana Duffy
- DET category – Warren Dawson
- Student category – Jaunty Soe and Maddison Hunter

Disability Inclusion Reform

Disability Inclusion reform is part of DET's commitment to supporting all students to thrive while at school. The purpose of this reform is to provide the necessary support for all students with disabilities, where accommodations and adjustments enable them to engage in their learning. The initiative will also increase access for teachers to engage in professional learning, evidence-based resources and has a strengths-based approach.

Ashley Kalkandis has been appointed as our Leading Teacher (Inclusion) and her role will help guide our staff and community in the implementation of new processes for student eligibility to attend Hamlyn Views School, determining student funding levels, and promoting inclusive practices that maximise the learning and wellbeing outcomes for all students. There will be further updates regarding this focus throughout the year.

2022 Back to School Program Donation

The Geelong Community Foundation in conjunction with the Foundation for Rural and Regional Renewal, the Clover Family Charitable Trust, William Angliss Charitable Fund and supporting partners, have provided our school with a number of \$50 Target gift

cards to be used for school supplies. These will be distributed by our Wellbeing Team to families on a needs basis. We are grateful for this assistance to our school community from these organisations.

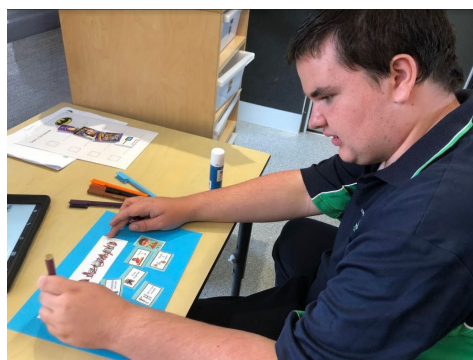
Happy News

We send our best wishes and congratulations to Mollie Stirton and husband Luke on the arrival of their baby 'Teddy William' earlier this week.

Regards

Suzanne Armstrong

Principal



From the Office



We will be sending home with students today an envelope containing a Student Enrolment Information Form and a letter detailing school payment arrangements including BPAY codes. The Student Enrolment Information Form is sent home every year to help us ensure that our records are correct and up to date. Please mark any changes required to your child's information, sign and return this form to the school. We ask that you sign and return this form even if all of the information is correct.

With our new parent payment arrangements, statements will no longer be sent home. All contributions to the school are voluntary and tax deductible. The letter you will receive today contains payment methods for these contributions. If you have any questions, please do not hesitate to contact Carolyn in the office.

Kind regards,

Carolyn Haskett

Business Manager

Senior Secondary Sport - Cricket Clinic

Students in Senior Secondary have been participating in a weekly cricket clinic, which is run by Kara, a coach from Cricket Victoria.

They have enjoyed practising different skills, including bowling, catching, and striking. Well done Senior Secondary Students for your participation in the program so far.



Wheelchair Basketball Competition

Child Safe Standards - Zero tolerance for child abuse

Hamlyn Views School is committed to the safety and wellbeing of children and young people. Our school community

recognises the importance of, and a responsibility for, ensuring our school is a safe, supportive, and enriching environment which respects and fosters the dignity and self-esteem of children and young people, and enables them to thrive in their learning and development. Further information & resources:

www.education.vic.gov.au/protect

SunSmart School



Being SunSmart is important for everyone, and we thank parent/carers for your support by sending in a hat for your child.

If your child needs a new school hat, they can be purchased from our uniform supplier Bellarine Uniforms. Order forms are available from the school office. Just ask our friendly Admin staff.

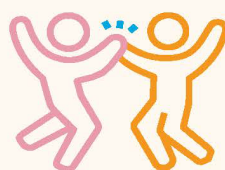
Respectful school communities start with respectful behaviour

Parents, carers, staff and students can help keep our school community safe, supportive and respectful.

Good relationships are based on:



Open and honest communication



Trust and respect



Working together



Fair and reasonable expectations by all

These behaviours are **not** okay in our school community:

- ⊗ Threats
- ⊗ Violence
- ⊗ Rudeness
- ⊗ Harassment
- ⊗ Discriminatory and derogatory comments
- ⊗ Aggression
- ⊗ Intimidation
- ⊗ Threatening gestures

This includes in-person, over-the-phone, email, text message, social media and online.

For more information ask your school about the **Respectful Behaviours within the School Community Policy**.

21-088



Education and Training

Hamlyn Views School is committed to the safety and wellbeing of all children and young people and has zero tolerance for any form of child abuse.

PROTECT

Protecting children & young people from abuse is our responsibility



We would like to acknowledge the traditional owners of the land and waterways where we come to school to learn and play.
Together we touch the land of the Waddawurrung people.
Together we reach for the sky of the Waddawurrung people.
Together we hold our hearts for the care of the Waddawurrung land.

